

# AREAS OF EXPERTISE

- URBAN PLANNING ■
- URBAN DESIGN ■
- TOD DESIGN ■
- ZONING & CODING ■
- SUBURBAN RETROFIT ■
- SITE PLANNING ■
- URBAN ECONOMICS ■
- STRATEGIC PLANNING ■
- REGIONAL PLANNING ■
- COMPREHENSIVE PLANNING ■
- ENVIRONMENTAL PLANNING ■



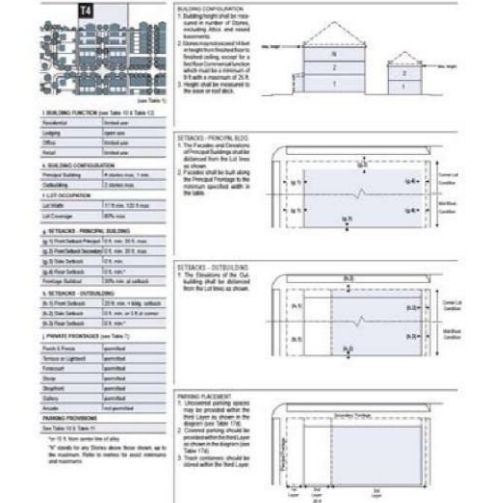
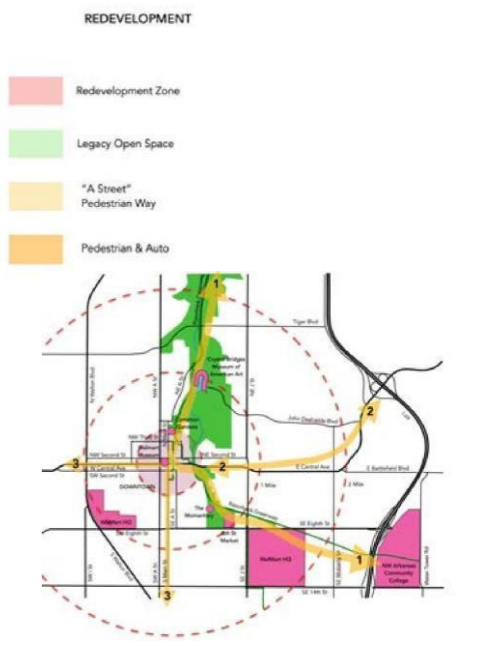
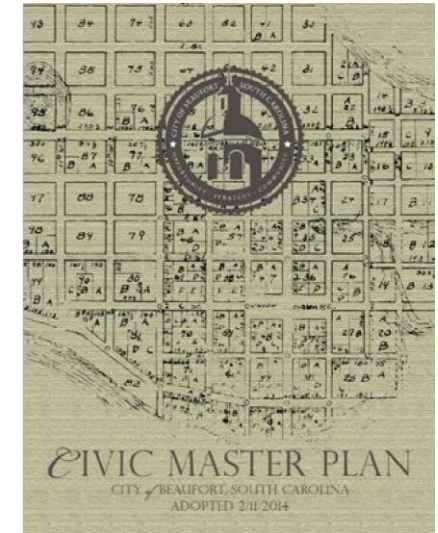
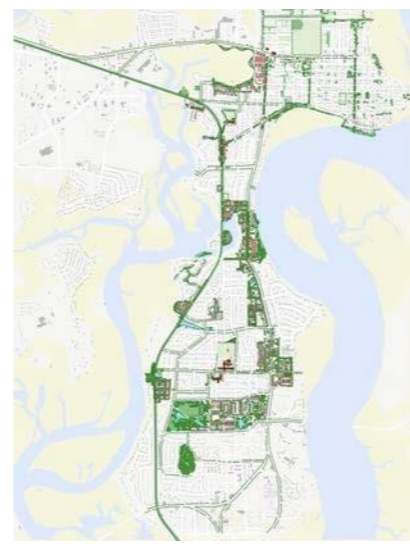
DEMETRI BACHES, AICP, CNUA

- AFFORDABLE HOUSING
  - URBAN POLICY
  - REAL ESTATE DEVELOPMENT
  - ECONOMIC DEVELOPMENT
  - ARCHITECTURE
- 

- TEAM BUILDING
- PROJECT MANAGEMENT
- DECISION MAKING
- WRITING
- WORKSHOP FACILITATION
- PUBLIC SPEAKING
- TRAVEL

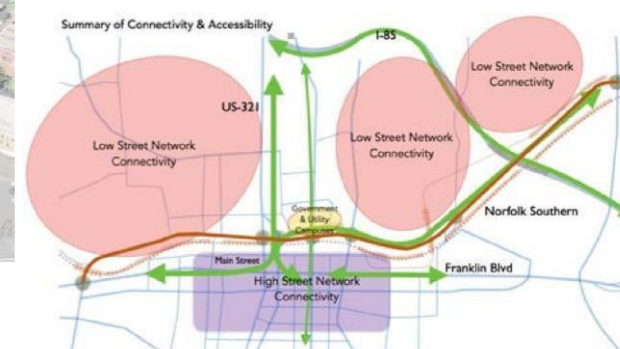
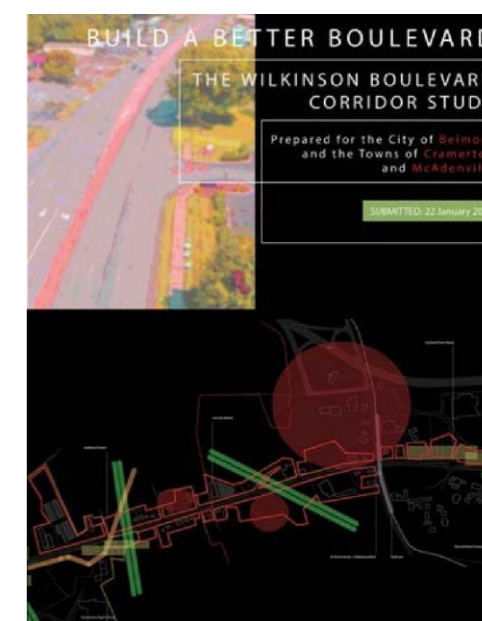
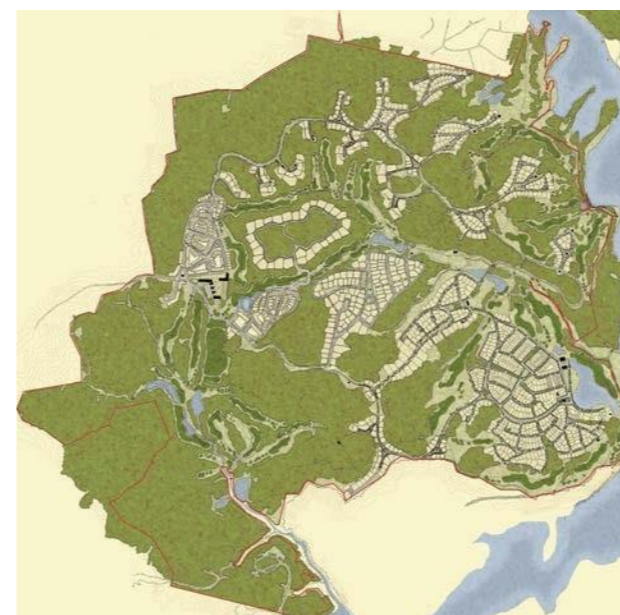
# DEMETRI IS THE FOUNDER AND MANAGING PRINCIPAL<sup>1</sup> OF METROCOLOGY INC., A UNITED STATES BASED CONSULTANCY, DEDICATED TO RESILIENT, ADAPTIVE URBAN PLANNING, ZONING, AND DESIGN.

- 1 \* CREATED THE OFFICE OF CIVIC INVESTMENT TO ENABLE A MUNICIPAL STRUCTURE CAPABLE OF ENGAGING IN A CITY WIDE, MULTI-YEAR CIVIC MASTER PLANNING & CAPITAL IMPROVEMENTS EFFORT FOR BEAUFORT, SC. ORGANIZED CONSULTANT TEAM, AND CITY REDEVELOPMENT AUTHORITY TO EXECUTE AND OVERSEE PROJECTS. DIRECTOR IN CHARGE OF "ON-THE-GROUND" OPERATIONS FOR THE CITY, IN PARTNERSHIP WITH CO-LEAD, THE LAWRENCE GROUP.
- \* TEAMED WITH URBAN3 TO DEVELOP MODELING THAT EXAMINES PUBLIC INFRASTRUCTURE ALLOCATION IN RELATION TO ENVIRONMENTAL COSTS & BENEFITS FROM MIXED USE ZONING IN ORDER TO OPTIMIZE MULTI-MODAL CORRIDOR PLANNING.
- \* RETAINED BY WALTON ENTERPRISES TO ASSESS THE IMPACTS OF PEDESTRIANIZING STREET CORRIDORS IN DOWNTOWN BENTONVILLE, AR. PREPARED MASTER PLAN FOR "NORTH A STREET" TO ILLUSTRATE APPLICATION OF BEST PRACTICES WITHIN THE CONTEXT OF BENTONVILLE AND SURROUNDING METROPOLITAN AREA.
- \* RETAINED BY SIXROCK GROUP, ROCKEFELLER FAMILY OFFICE, TO ASSESS DEVELOPMENT AND/OR REPURPOSING OPPORTUNITIES FOR ECONOMICALLY & ENVIRONMENTALLY UNDERPERFORMING GOLF COURSE PROPERTIES IN THE STATES AND ABROAD.
- \* RETAINED BY HUGHS DEVELOPMENT TO WRITE CODE AND PLANNING DOCUMENTS AND NEGOTIATE WITH CITY OF COLUMBIA, SC TO APPROVE PLAN APPLICATION FOR BULL STREET, THE CITY'S LARGEST EVER PRIVATE DEVELOPMENT PROJECT.



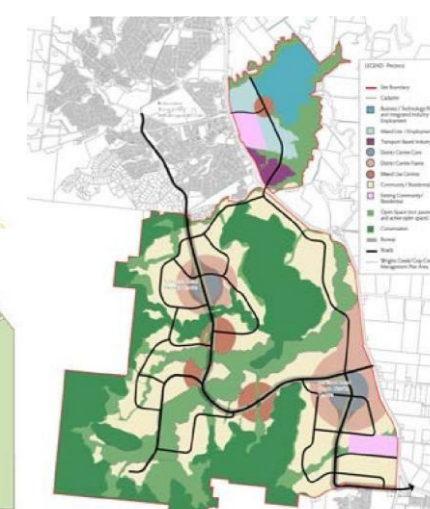
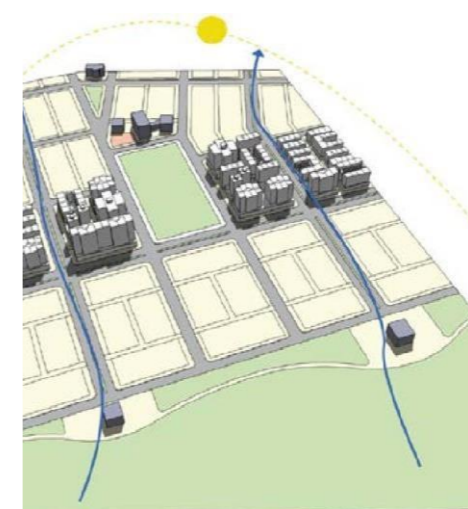
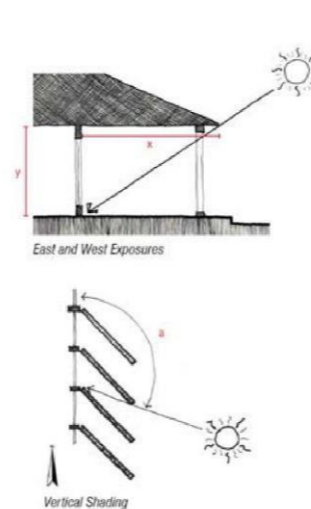
## (METROCOLOGY, CONTINUED)

- \* LEAD MASTER PLANNER FOR WEITI, A MIXED USE PRECINCT IN NORTH AUCKLAND, NZ, AND CONTINUES TO PARTICIPATE AND MAKE MODIFICATIONS TO EACH NEW PHASE OF DEVELOPMENT ASSESSED AGAINST TRANSPORTATION INVESTMENTS, RESIDENTIAL MARKET PERFORMANCE AND CLIMATE CHANGE IN CONJUNCTION WITH BOFFA MISKELL, AND WOODS & PARTNERS.
- \* RETAINED TO REVIEW AND IMPROVE THE "KEY ACTIVITY CENTRE PLANNING" PROCESS OF CHRISTCHURCH, NZ, TO ESTABLISH CRITERIA FOR THE SELECTION OF REGIONAL AND SUB REGIONAL CENTERS BASED ON TRANSPORTATION ACCESS AND TRANSIT PLANNING, AS PART OF A PROPOSED MIXED USE DEVELOPMENT SUBMISSION IN HALSWELL.
- \* RETAINED BY OPPENHEIM ARCHITECTS AND PORT MIAMI, TO LEAD THE DEVELOPMENT OF A MASTER PLAN FOR THE NEW WORLD TRADE CENTER AND SURROUNDING MIXED USE URBAN DISTRICT AT THE PORT OF MIAMI, FL.
- \* ESTABLISHED THE NEED FOR AND SECURED APPROVALS TO CONDUCT A MULTI-JURISDICTIONAL TRANSPORTATION CORRIDOR MASTER PLAN FOR BELMONT, CRAMERTON, AND MT HOLLY, NC, IN ADVANCE OF NORTH CAROLINA DEPARTMENT OF TRANSPORTATION IMPROVEMENTS TO AN ADJOINING INTERSTATE, AND THE CITY OF CHARLOTTE'S PROPOSED LIGHT RAIL EXTENSION INTO THE GASTON COUNTY.
- \* LEAD MASTER PLANNER FOR THE NC-7 CORRIDOR STUDY AND MASTER PLAN FOR THE CITY OF GASTONIA, NC. METROCOLOGY APPROACHED THE TASK FROM OF IMPROVING THIS IMPORTANT GATEWAY INTO THE CITY'S DOWNTOWN CONDUCTING A STUDY OF TRANSPORTATION CONNECTIVITY, STREET IMPROVEMENTS, AND MARKET DYNAMICS, IN ORDER TO DOCUMENT FOR THE CITY A FULL SPECTRUM ANALYSIS OF RECOMMENDATIONS IMPLEMENTATION STEPS.



## (METROCOLOGY, CONTINUED)

- \* PARTICIPATED IN THE FIVE YEAR APPROVALS PROCESS OF PACIFIC VIEW ESTATES, THE LARGEST MIXED USE DEVELOPMENT ON THE GOLD COAST OF AUSTRALIA.
- \* RETAINED BY WRS TO MASTER PLAN THE REDEVELOPMENT OF LAKE FOREST MALL, A FAILED RETAIL CENTRE IN GAITHERSBURG, MD.
- \* ESTABLISHED THE NEED FOR AND SECURED APPROVALS TO CONDUCT A MULTI-YEAR RE-WRITE OF THE CITY OF GASTONIA'S URBAN DEVELOPMENT ORDINANCES. THE RE-WRITE INCLUDES A SERIES OF SMALL AREA PLANS TO ILLUSTRATE THE IMPACTS THE NEW ORDINANCE WILL HAVE ON COMMERCIAL, INDUSTRIAL, AND HOUSING DEVELOPMENT. THE WORK PAYS PARTICULAR ATTENTION TO HOUSING AFFORDABILITY AND EQUITY AS THEY RELATE TO BUILDING TYPES AND TRANSPORTATION ACCESS.
- \* RETAINED BY TAK & ASSOCIATES AND CHINA HORSE CLUB AS LEAD MASTER PLANNER FOR PEARL OF THE CARIBBEAN INTEGRATED BUSINESS, RESORT, AND EQUINE CENTER IN SAINT LUCIA. THE PROJECT REPRESENTS A US\$ 2 BILLION INVESTMENT TO PROPEL SAINT LUCIA INTO THE TOP TIER OF CARIBBEAN RESORT AND BUSINESS DESTINATIONS, TAKING ADVANTAGE OF ITS FAVORABLE, LOW RISK HURRICANE LOCATION, AND PROXIMITY TO THE RECENTLY DISCOVERED OIL FIELDS OF TRINIDAD AND TOBAGO. STAGES ONE AND TWO CONSIST OF DEVELOPMENT OF THE ROYAL SAINT LUCIA TURF CLUB, MASTER PLAN FOR THE HOME PORT FOR ROYAL CARIBBEAN, AND EXPANSION OF THE COUNTRY'S INTERNATIONAL AIRPORT.
- \* RETAINED BY CAIRNS REGIONAL COUNCIL TO DEVELOP AN ARCHITECTURE AND URBAN DESIGN MANUAL FOR THE DEVELOPMENT OF MOUNT PETERS IN QUEENSLAND AUSTRALIA. THE MANUAL DESCRIBES THE PRINCIPLE & TECHNIQUES NECESSARY TO DEVELOP SUSTAINABLE, MIXED USE, URBAN PLACES IN TROPICAL CLIMATES.

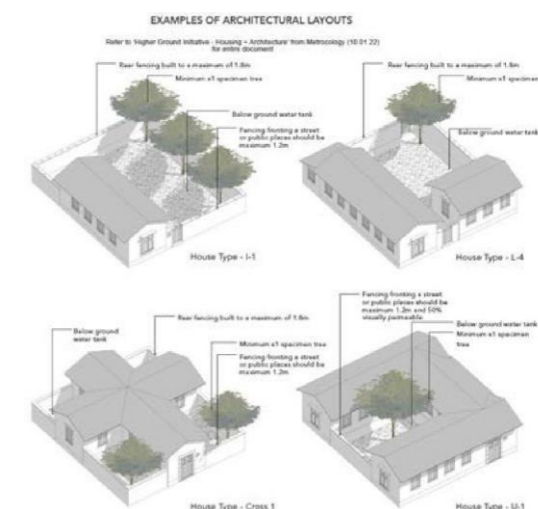
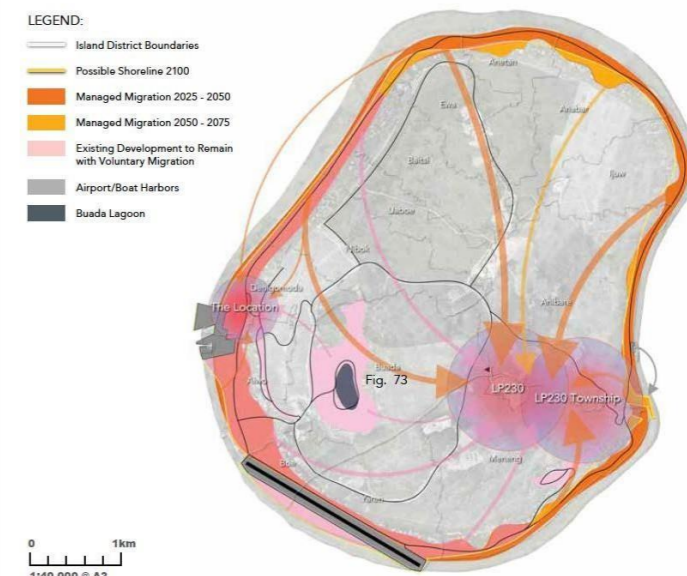


## (METROCOLOGY, CONTINUED)

\* PROJECT DIRECTOR AND LEAD PLANNER OF THE HIGHER GROUND INITIATIVE, (HGI) FOR THE NATION OF NAURU. WORKING WITH AN INTERDISCIPLINARY TEAM SPANNING FOUR COUNTRIES A STRATEGIC REDEVELOPMENT PLAN WAS ESTABLISHED FOR THE ENTIRE NATION, FOCUSED ON HOUSING DESIGNS THAT MEET THE NEEDS OF THE POPULATION, AND A DELIVERY PROCESS THAT ALIGNS WITH THE NATION'S CAPACITY TO DEVELOP NEW COMMUNITIES ON LANDS REQUIRING ENVIRONMENTAL REHABILITATION ON THE ISLAND'S INTERIOR, CALLED TOPSIDE, TO MITIGATE DECADES OF PHOSPHATE MINING.

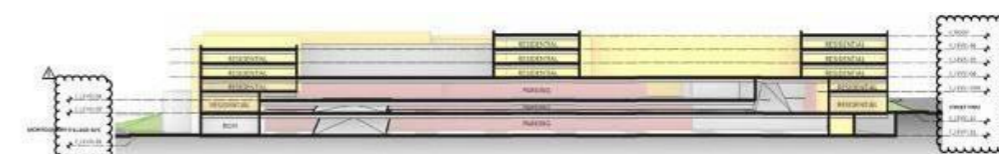
AN ISLAND WIDE MASTER PLAN WAS PREPARED TO PHASE THE ENVIRONMENTAL IMPROVEMENTS NEEDED TO ALLOCATE NEW LANDS ON "TOPSIDE" FOR SETTLEMENT MASTER PLANNING NOT IMPACTED BY CLIMATE CHANGE AND SEA LEVEL RISE. TO SUPPORT THE POPULATION AND INSURE NATIONAL SOVEREIGNTY IN THE DECADES TO COME AN AGRICULTURAL PLAN WAS PREPARED TO PROVIDE STRATEGIC GUIDANCE FOR ESTABLISHING AN "ON ISLAND" AGRICULTURAL INDUSTRY CAPABLE OF PROVIDE 15% TO 20% OF THE CALORIC NEEDS OF THE POPULATION.

A SITE SPECIFIC MASTER PLAN FOR THE INAUGURAL COMMUNITY ON "TOPSIDE" WAS PREPARED AND PRE ENGINEERED TO INITIATE INVESTOR OUTREACH. THE DEVELOPMENT SERVES AS THE "PILOT PROJECT" FOR THE HIGHER GROUND INITIATIVE, SHOWCASING THE NATION'S NEW HOUSING PLANS, INFRASTRUCTURE UPGRADES, ENVIRONMENTAL REHABILITATION, AND AGRICULTURAL INITIATIVES.

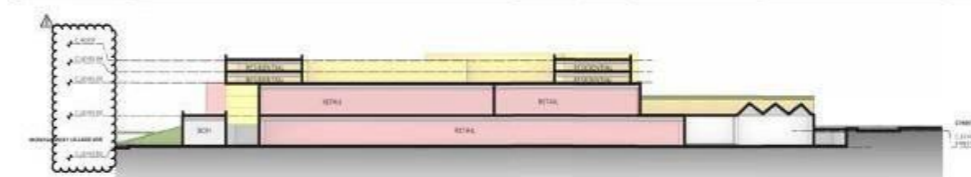


## (METROCOLOGY, CONTINUED)

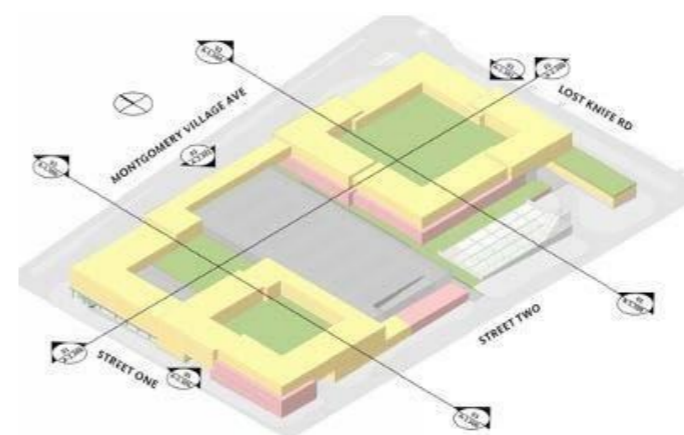
\* RETAINED BY WRS DEVELOPMENT TO LEAD THE MASTER PLANNING PROCESS AND DESIGN FOR THE REDEVELOPMENT OF LAKEFOREST MALL IN GAITHERSBURG, MD. THE REDEVELOPMENT PROGRAM INVOLVES THE DEMOLITION OF AN EXISTING 1.2 MILLION SQUARE FOOT MALL AND THE CONSTRUCTION OF A MIXED USE, TOWN CENTER, ENCOMPASSING UP TO 600,000 SQUARE FEET OF RETAIL/COMMERCIAL USES, 800,000 SQUARE FEET OF OFFICE, 50,000 SQUARE FEET OF CIVIC USES, AND OVER 1,600 RESIDENTIAL UNITS RANGING FROM MULTI FAMILY, TOWNHOMES, AND SINGLE FAMILY.



03 C - N/S SECTION 02

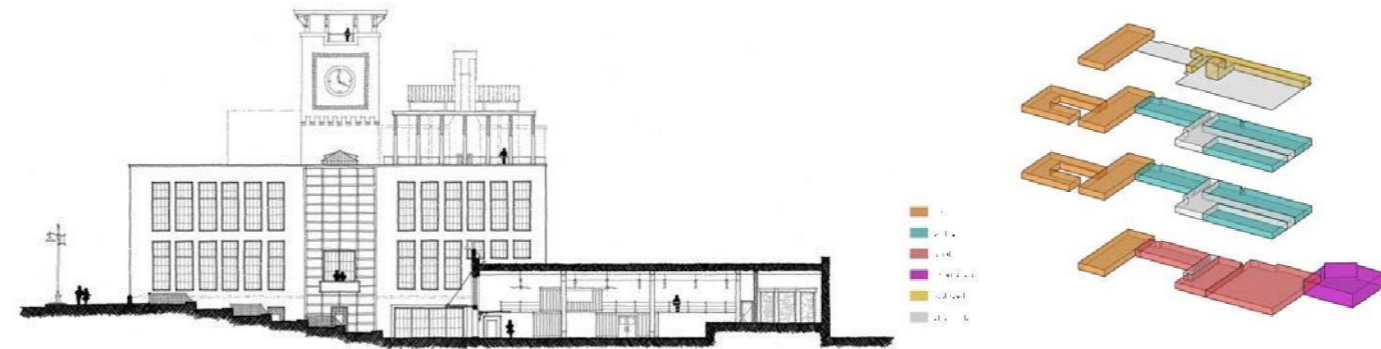


02 C - N/S SECTION 01



DEMETRI IS ALSO OWNER<sup>2</sup> OF AGEAN, LLC, A REAL ESTATE DEVELOPMENT CONSULTANCY FOCUSED ON AFFORDABLE AND EQUITABLE HOUSING DEVELOPMENT AND THE ADAPTIVE RE-USE OF HISTORIC BUILDINGS.

- 2 \* LED THE MULTI-YEAR MASTER PLANNING AND DEVELOPMENT OF SOUTH OF LITCHFIELD, AN URBAN REDEVELOPMENT PROJECT IN DOWNTOWN CHRISTCHURCH NZ, FOR PROPERTY VENTURES. THE PLAN RENOVATED SEVERAL HERITAGE BUILDINGS, AND CONSTRUCTED INFILL DEVELOPMENT TO CREATE AN ENTERTAINMENT AND RESIDENTIAL DISTRICT.
- \* CONVINCED WATERSTONE CAPITAL TO REDEVELOP RATHER THAN DEMOLISH THE HISTORIC CHRONICLE MILL IN DOWNTOWN BELMONT NC. MANAGED THE CONSULTANT TEAM AND LED THE MASTER PLANNING OF THE MILL PROPERTY AND SURROUNDING NEIGHBORHOODS, AND PREPARED THE SITE PLAN FOR THE MILL PROPERTY.



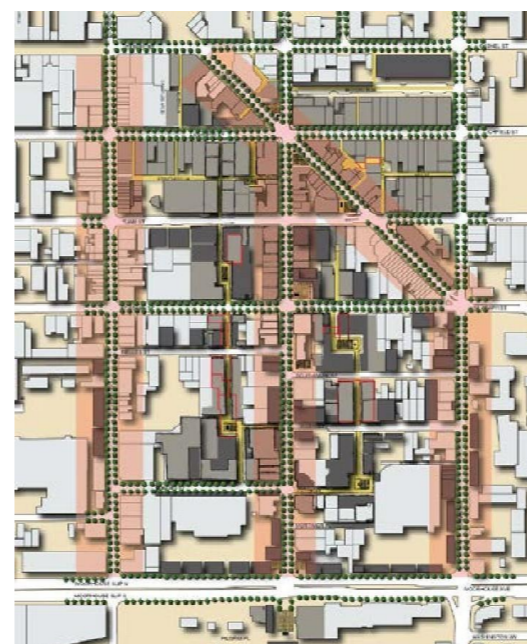
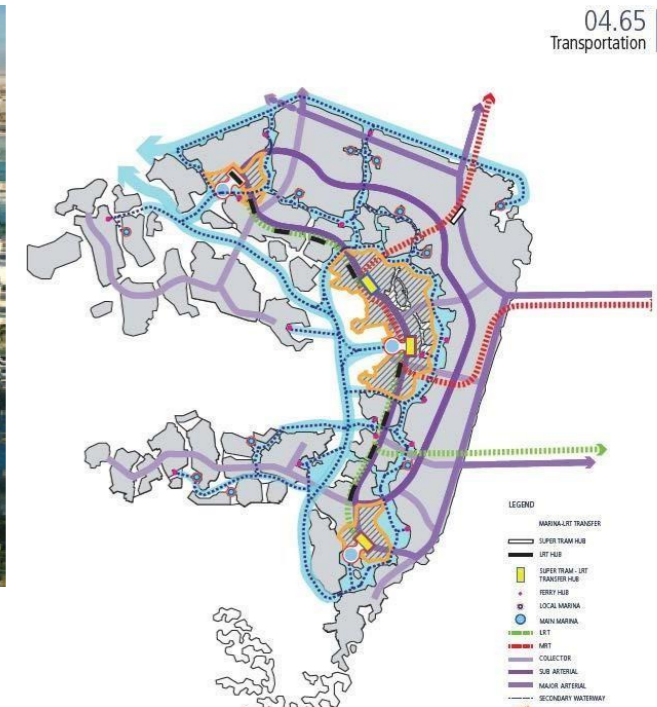
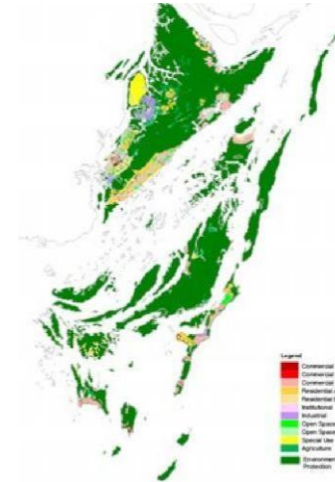
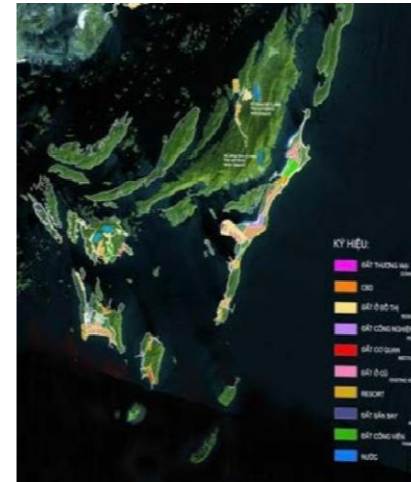
PREVIOUSLY, HE WAS THE CO-FOUNDER AND MANAGING PARTNER<sup>3</sup> OF DPZPACIFIC, THE FIRST AFFILIATE OFFICE OF DPZ & COMPANY, BASED IN KUALA LUMPUR, MALAYSIA.

- 3 \* WON FIRST PLACE IN INTERNATIONAL DESIGN COMPETITION FOR THE NEW CITY EXTENSION OF DAIJEON, SOUTH KOREA.
- \* IN PARTNERSHIP WITH ROBERTSDAY AND TAK & ASSOCIATES PREPARED THE MASTER PLAN FOR THE NEW CITY OF MADINAT AL ARAB, FOR UAE VICE PRESIDENT, SHEIKH MOHAMMED BIN RASHID AL MAKTOUM.



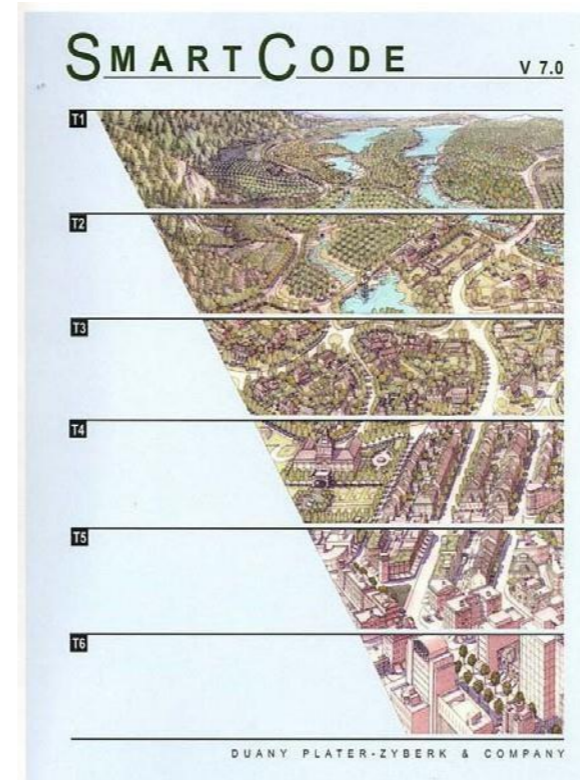
## (DPZPACIFIC, CONTINUED)

- \* TOGETHER WITH ROBERTSDAY DEVELOPED THE DOWNTOWN MASTER PLAN FOR IPSWITCH, AUSTRALIA, PROPOSING NEW DEVELOPMENT SITES BE COORDINATED WITH IMPROVED TRANSPORTATION AND OPEN SPACE INFRASTRUCTURE, WITH PEDESTRIAN CONNECTIVITY INTO SURROUNDING NEIGHBORHOODS.
- \* LED A MULTI-DISCIPLINARY TEAM FOR EAGA CORP., TO PREPARE THE REGIONAL MASTER PLAN FOR A THE VAN DON ECONOMIC ZONE IN NORTHERN VIETNAM. WORKING IN CLOSE CALIBRATION WITH THE VIETNAM INSTITUTE OF ARCHITECTURE AND THE QUANG NINH PROVINCIAL GOVERNMENT THE MASTER PLAN'S MAIN GOAL WAS TO ILLUSTRATE THE BALANCE BETWEEN PRESERVATION AND DEVELOPMENT OF THIS UNESCO WORLD HERITAGE DESIGNATED SITE.
- \* RETAINED BY OPPENHEIM ARCHITECTURE TO MASTER PLAN THE URBAN EXTENSION OF ABU DHABI ONTO EXISTING HUDAYRIAT ISLAND AND EXPANSION OF THE ISLAND THROUGH LAND RECLAMATION AND BAY REPLENISHMENT TO IMPROVE MANGROVE HEALTH AND WATER QUALITY.
- \* LEAD MASTER PLANNER FOR PACIFIC VIEW ESTATES IN SURFERS PARADISE, QUEENSLAND AUSTRALIA. LOCATED JUST OUTSIDE THE URBAN GROWTH BOUNDARY, THE MASTER PLAN ENVISIONS A SERIES OF NEIGHBORHOODS RANGING IN DENSITY FROM A COMMERCIAL MIXED USE DISTRICT ALONG THE PACIFIC MOTORWAY TO HILLSIDE LOW DENSITY NEIGHBORHOODS ON THE LOWER SLOPES OF THE BLUE MOUNTAINS. THE PROJECT REPRESENTS THE LARGEST EXPANSION OF THE COUNCIL'S URBAN GROWTH BOUNDARY.
- \* LEAD MASTER PLANNER FOR CENTRAL CITY SOUTH, IN CHRISTCHURCH NEW ZEALAND. THE PLAN CENTERS ON THE SOUTHEAST QUADRANT OF DOWNTOWN CHRISTCHURCH WHICH IS HOME TO THE LARGEST CONCENTRATION OF HERITAGE LISTED BUILDINGS IN THE CITY. THE PLAN SEEKS TO INTERCONNECT BLOCKS WITH A SYSTEM OF PEDESTRIAN LANES TO PROVIDE BETTER ACCESSIBILITY AND ENCOURAGE BUSINESS DEVELOPMENT.



## PRIOR TO THAT, DEMETRI WAS DIRECTOR OF PROJECTS<sup>4</sup> WITH DUANY PLATER-ZYBERK & COMPANY RESPONSIBLE FOR SOURCING NEW WORK AND LEADING THE FIRM'S INITIATIVES AROUND THE WORLD.

- 4 \* PROJECT MANAGED THE DEVELOPMENT, PROMOTION AND DISTRIBUTION OF THE SMARTCODE LED BY ANDRES DUANY AND IN PARTNERSHIP WITH MUNICODE.
- \* PROJECT MANAGED UPDATES TO THE LEXICON OF NEW URBANISM, LED BY ANDRES DUANY AND ELIZABETH PLATER-ZYBERK.
- \* PROJECT MANAGED THE MASTER PLANNING OF THE DIPLOMATIC NEIGHBORHOOD AND REGIONAL CENTRE FOR PUTRAJAYA, THE NEW ADMINISTRATIVE CAPITOL OF MALAYSIA, IN COLLABORATION WITH TAK & ASSOCIATES.
- \* DIRECTED THE ULI'S MILLENNIUM PROJECT, IN 2000 IN COLLABORATION WITH BEAZER HOMES AND HGTV, LOCATING AND DEVELOPING THREE INFILL LIVE WORK UNITS DESIGNED BY ANDRES DUANY IN THE CASTLEBERRY HILL NEIGHBORHOOD OF ATLANTA, GA.
- \* PROJECT MANAGED THE MASTER PLAN FOR ATLANTIC STATION LOCATED IN ATLANTA, GA. THE LARGEST BROWNFIELD RECLAMATION AND INFILL DEVELOPMENT IN THE CITY'S HISTORY AT THE TIME.
- \* PROJECT MANAGED THE EL TORRO MARINE BASE CONVERSION AND MASTER PLAN IN COLLABORATION WITH THE PLANNING CENTER, IN ORANGE COUNTY, CA
- \* DIRECTED THE DEVELOPMENT OF AFFORDABLE HOUSING PROTOTYPE, DESIGNED BY ANDRES DUANY, FOR MIGRANT FARMER WORKERS, IN WIMAUMA, FLORIDA.



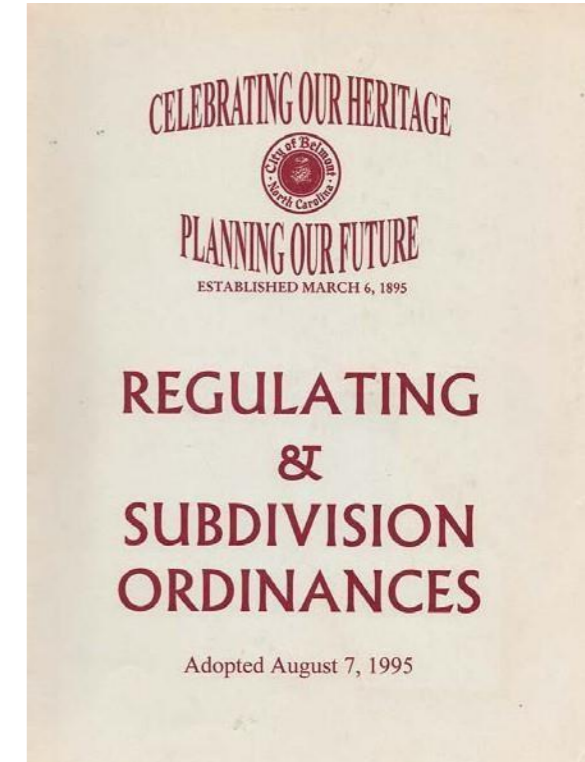
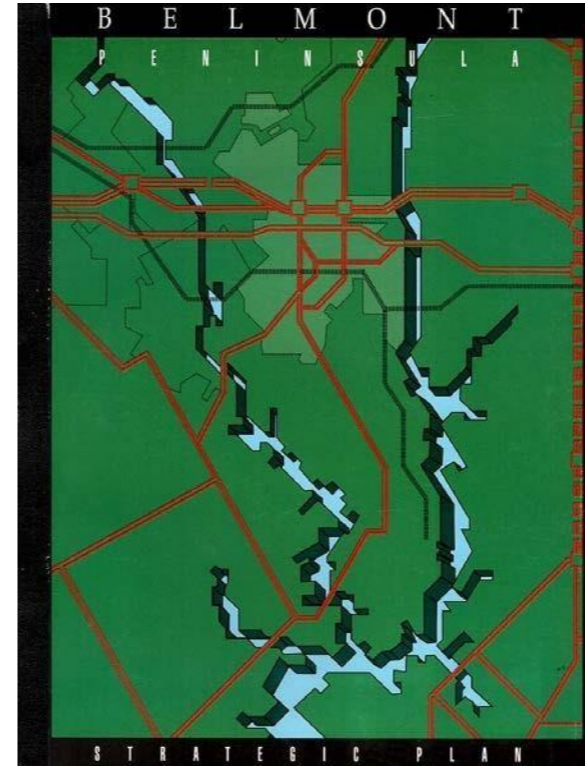
## (DUANY PLATER-ZYBERK & Co, CONTINUED)

- \* PROJECT DIRECTOR FOR LEGACY TOWN CENTER, IN PLANO TX, THE FIRST SUBURBAN RETROFIT IN METROPOLITAN DALLAS. THE MASTER PLAN PROVIDED FOR THE REDEVELOPMENT OF EDS CORPORATE PROPERTY UNDERUTILIZED AS PARKING AND LANDSCAPE BUFFERING INTO A WALKABLE, TRANSIT READY, MIXED USE TOWN CENTER. DEMETRI WORKED WITH THE EDS TEAM WHICH INCLUDED ROSS PEROT, THE FOUNDER OF THE COMPANY.
- \* PROJECT DIRECTOR FOR ATLANTIC STATION, IN ATLANTA GEORGIA, ONE OF THE LARGEST BROWNFIELD RECLAMATION PROJECTS IN THE UNITED STATES. THE PROJECT WAS A PUBLIC-PRIVATE PARTNERSHIP BETWEEN THE CITY OF ATLANTA AND JACOBY DEVELOPMENT/AIG ENGAGED TO ADDRESS THE US ENVIRONMENTAL PROTECTION AGENCY'S POTENTIAL REDUCTION IN FUNDING TO THE CITY DUE TO AIR POLLUTION VIOLATIONS. THE PROJECT WON THE EPA'S 2004 PHOENIX AWARD FOR BEST BROWNFIELD REDEVELOPMENT.
- \* PROJECT MANAGED HABERSHAM, IN BEAUFORT SC, A MIXED USE NEW TOWN OF OVER 400 ACRES AND 1,000 UNITS. THE MASTER PLAN HAS WON NUMEROUS AWARDS INCLUDING THE NATIONAL HOME BUILDERS ASSOCIATION'S "BEST IN LIVING" PLATINUM AWARD, FOR ITS DESIGN AND UNIQUE MIX OF INNOVATIVE HOUSING TYPES.
- \* PROJECT MANAGED I'ON, IN CHARLESTON SC WHICH, SINCE ITS DEVELOPMENT, HAS ACHIEVED PER ACRE TAX VALUATIONS EQUAL TO THOSE OF DOWNTOWN CHARLESTON.
- \* PROJECT MANAGED BELLE CHASE, IN NEW ORLEANS LA, A DEVELOPMENT IN PARTNERSHIP WITH THE US NAVY'S NATIONAL EFFORT TO PROVIDE NEW AND REDEVELOPED ON-BASE HOUSING FOR SERVICE MEMBERS.
- \* DIRECTED THE FIRM'S NEGOTIATIONS WITH THE CITY OF MIAMI TO DEVELOP THE PURPOSE & NEED, SCOPE & BUDGET, FOR MIAMI21, THE CITY'S FORM BASED CODE PROJECT.



## AND BEFORE THAT, DEMETRI WAS THE PLANNING DIRECTOR<sup>5</sup> FOR THE CITY OF BELMONT, NC.

- 5 \* INAUGURATED THE CITY'S FIRST PLANNING DEPARTMENT
- \* PREPARED AND IMPLEMENTED THE CITY'S FORM BASED CODE TO REPLACE ITS ZONING ORDINANCE, THE FIRST SUCH CODE FOR AN EXISTING MUNICIPALITY IN THE UNITED STATES.
  - \* PLANNED AND DIRECTED THE CITY'S DOWNTOWN MAIN STREET IMPROVEMENT PROJECT, CONSISTING OF TWO COMPONENTS, 1- REPLACEMENT AND EXTENSION OF AGING INFRASTRUCTURE TO ENCOURAGE BUILDING REDEVELOPMENT, AND 2- STREETScape IMPROVEMENTS TO WIDEN SIDEWALKS, INSTALL STREET TREES, AND INCORPORATE DECORATIVE LIGHTING AND SIGNAGE.
  - \* LED EFFORT TO INCLUDE BELMONT INTO THE NORTH CAROLINA MAIN STREET PROGRAM, WHICH, ALONG WITH THE MAIN STREET PROJECT, REVITALIZED THE CITY'S STRUGGLING DOWNTOWN.
  - \* PARTICIPATED IN THE CATAWBA RIVER CORRIDOR STUDY, LED BY THE CENTRALINA COUNCIL OF GOVERNMENTS TO PLAN FOR REGIONAL GROWTH ALONG BELMONT'S EXTENSIVE CATAWBA RIVER FRONTAGE.
  - \* MANAGED THE BELMONT PENINSULA STUDY, LED BY MICHAEL GALLIS & ASSOCIATES CONSULTANTS, TO IDENTIFY STRENGTHS AND CHALLENGES TO THE CITY'S FUTURE GROWTH AND TRANSPORTATION NEEDS RESULTING FROM THE CITY'S UNIQUE GEOGRAPHY BETWEEN TWO RIVERS.
  - \* LED THE CITY'S EFFORTS TO PRESERVE EXISTING MILL NEIGHBORHOODS IN COLLABORATION WITH PHARR YARNS INC. FIRST SUCCESSFUL PROJECT WAS THE REDEVELOPMENT OF THE ADAMS BLUFF MILL NEIGHBORHOOD FOR WORKFORCE HOUSING.



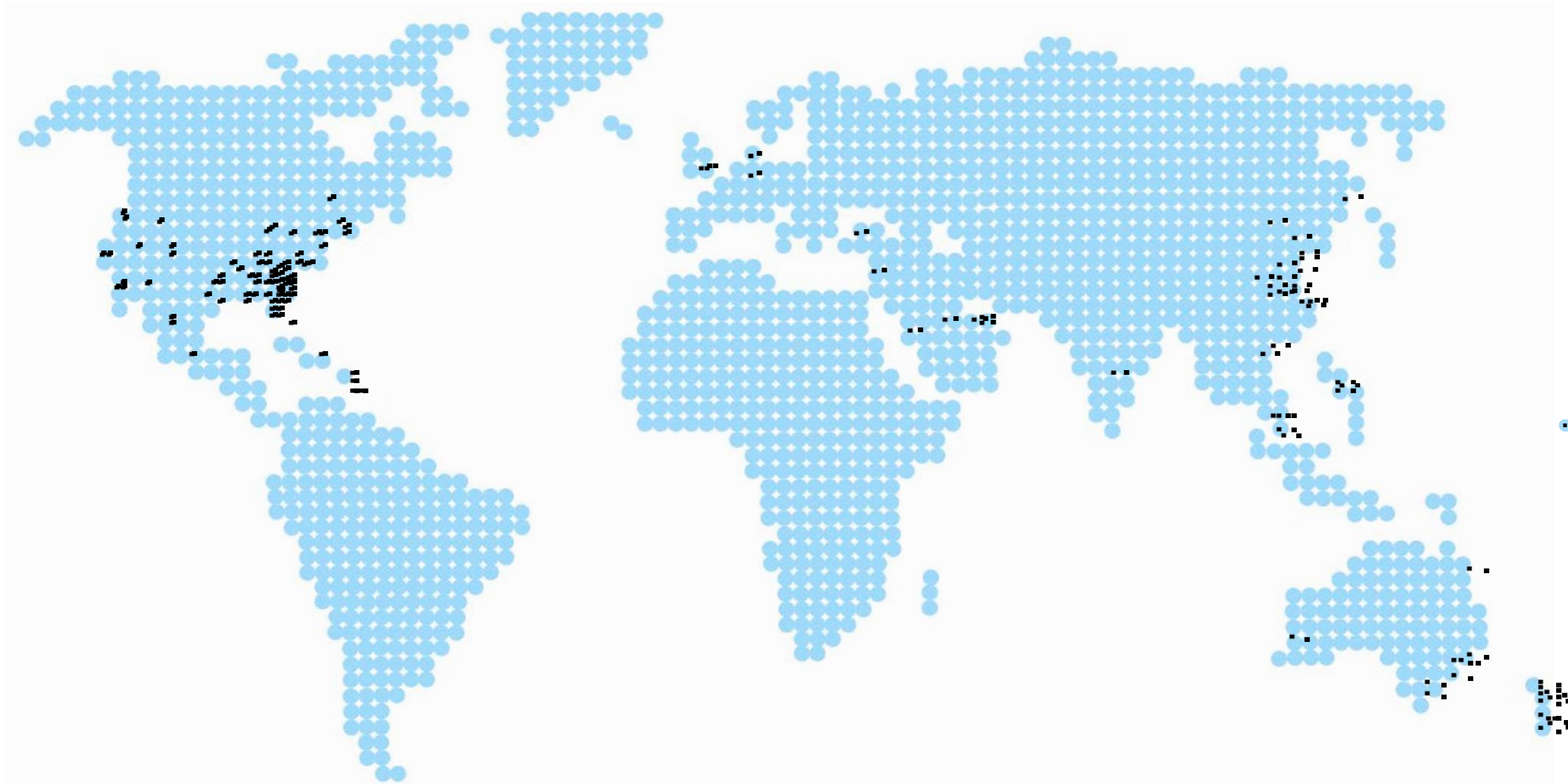
IN ADDITION TO COUNTLESS PROJECT SPECIFIC BOOKLETS AND PUBLICATIONS, DEMETRI HAS, LECTURED, PRESENTED, BEEN INTERVIEWED, QUOTED, AND AWARDED OFTEN OVER THE COURSE OF HIS CAREER BY THE MEDIA, AT CONFERENCES, AND IN PROFESSIONAL PUBLICATIONS. A SAMPLING ARE LISTED HERE:

- 2024: CONGRESS FOR THE NEW URBANISM: CHARTER AWARD - "THE HIGHER GROUND INITIATIVE"
- 2021: THE POWER OF DESIGN PODCAST #55, OSSA STUDIO: "DESIGNING THE PERFECT CITY"
- 2018: WBT RADIO: "CHARLOTTE SCENE", DEVELOPMENT IN GASTON COUNTY AND BELMONT, APRIL 2018
- 2017: NPR INTERVIEW: WABE RADIO, CLOSER LOOK WITH ROSE SCOTT, "UNDERGROUND ATLANTA", SEPT 7 2017
- 2016: CONGRESS FOR THE NEW URBANISM: CHARTER AWARD - "BEAUFORT CIVIC MASTER PLAN"
- 2015: NCAPA "BUILD A BETTER BOULEVARD" MARVIN COLLINS OUTSTANDING PLANNING AWARD
- 2014: SCAPA "BEAUFORT DOWNTOWN MASTER PLAN" OUTSTANDING PLANNING PROJECT AWARD
- 2011: URBAN LAND INSTITUTE, TAP MEMBER, CARTA INTERMODAL TRANSPORTATION ANALYSIS, CHARLESTON SC
- 2010: AFFORDABLE HOUSING & THE TRANSECT, PLANNING INSTITUTE OF AUSTRALIA, BRISBANE, AUSTRALIA
- 2010: URBAN LAND INSTITUTE, FORM BASED CODING IN REAL ESTATE DEVELOPMENT, WEBINAR, USA
- 2010: CRISIS AND BEYOND: THE PATH TO A POST-CARBON HUMAN HABITAT, GOLD COAST CITY COUNCIL, AUSTRALIA
- 2007: AUCKLAND REGIONAL COUNCIL PLANNING CONFERENCE, SPEAKER, AUCKLAND, NEW ZEALAND
- 2006: RADIO NEW ZEALAND, IDEAS SEGMENT, "URBAN COOL" INTERVIEW, AUCKLAND
- 2005: DAIJEON NEW CITY MASTER PLAN, COMPETITION WINNER, SOUTH KOREA
- 2004: NEW ZEALAND CUBES MAGAZINE, INTERVIEW, "THINKING OUTSIDE THE BOX", ISSUE 004, NEW ZEALAND
- 2004: GOLD COAST TRANSPORTATION PLANNING ADDRESS, GOLD COAST COUNCIL, SURFER'S PARADISE, AUSTRALIA
- 2003: PLANNING AND NEW URBANISM, FORUM, KEYNOTE, CHRISTCHURCH, NEW ZEALAND
- 2002: NEW URBAN NEWS, NATIONAL RADIOCAST, SMARTCODE, USA
- 2002: HGTV INTERVIEW, LIVE WORK HOUSING, TELEVISED SEGMENT, ATLANTA GA
- 2002: ROLLING STONE MAGAZINE, INTERVIEW, ASBURY PARK MASTER PLAN REDEVELOPMENT, NEW YORK NY
- 2001: CONGRESS FOR ASIAN NEW URBANISM, PRESENTER/PANELIST, MANILA, THE PHILIPPINES
- 2001: URBAN LAND INSTITUTE DEVELOPMENT AND TRANSPORTATION SUMMIT, PRESENTER AND PANELIST, MIAMI FL
- 1997: ARCHITECTURAL RECORD MAGAZINE, "THE NEW URBANISTS: THE SECOND GENERATION," USA
- 1996: ASIAN DEVELOPMENT CONFERENCE, PRESENTER/PANELIST, HARVARD GSD, CAMBRIDGE MA
- 1992: AIA NORTH CAROLINA STATE CONFERENCE, CHARLOTTE, KEYNOTE, CHARLOTTE NC

1,248 PRESENTATIONS ATTENDED

894 OF THOSE PRESENTATIONS DELIVERED

DEMETRI GROUNDS ALL HIS WORK AROUND A SINGLE BELIEF: URBAN PLANNING, ARCHITECTURE AND THE BUILT ENVIRONMENT HAVE A PROFOUND AND LASTING EFFECT ON PEOPLE'S LIVES AND MEMORIES.



**171** PROJECTS  
WORLDWIDE

**23** COUNTRIES  
REPRESENTED

DEMETRI'S EXTENSIVE PLANNING EXPERIENCE REPRESENTS A BROAD CATALOGUE OF PLANNING ENDEAVORS IN THE UNITED STATES AND ACROSS THE GLOBE. A SAMPLING ARE LISTED HERE:

**SELECTED UNITED STATES EXPERIENCE**

**DOWNTOWN MASTER PLANS**

Stallings Small Area Plans, Stallings NC  
 Cramerton 2050 Plan, Cramerton NC  
 Civic Master Plan, Beaufort SC  
 Downtown Statesboro, Statesboro  
 Downtown Sarasota Plan, Sarasota FL  
 Plan Baton Rouge, Baton Rouge LA  
 Town Center Extension, Cornelius NC  
 Downtown Revitalization, Fort Myers FL  
 Coral Gables, Coral Gables FL  
 West Palm Beach, West Palm Beach FL  
 Downtown Birmingham, Birmingham MI  
 Naples Plan, Naples FL

**URBAN INFILL/TOD MASTER PLANS**

PortMiami/WTC, Miami FL  
 Kline Property, Columbia SC  
 Civic Master Plan, Beaufort SC  
 Wilkinson South, Cramerton SC  
 Morris Square, Charleston SC  
 Atlantic Station, Atlanta GA  
 Stallings 2040, Stallings NC  
 Underground Atlanta, Atlanta GA  
 Gastonia's Other Main St., Gastonia NC  
 Legacy Town Center, Plano TX

**SPECIAL PROJECTS**

"Gastonia's Other Main Street": NC-7 Corridor Master Plan, Gastonia NC  
 Greenville Downtown Design Guidelines, Greenville SC  
 "Build a Better Boulevard": Corridor Master Plan, Belmont, Cramerton, McAdenville NC  
 Office of Civic Investment, Beaufort SC  
 Miami 21, Zoning Code, Miami FL  
 NAHB/ULI Live Works, Beazer Homes, Castleberry Hill, Atlanta GA  
 2012 Olympic Village Master Plan, Tampa FL

**CODING & ZONING**

Gastonia UDO Upgrade, Gastonia NC  
 Cramerton Code, Cramerton NC  
 Belmont Code Update, Belmont NC  
 Bull Street Redevelopment, Columbia SC  
 City of Statesboro, Statesboro GA  
 Sandy Point Code, Edenton NC  
 Cherokee Farms Code, Beaufort SC  
 Downtown Sarasota Code, Sarasota FL  
 Plan Baton Rouge Ordinance, Baton Rouge LA  
 Fallschase Code, Tallahassee FL  
 TOD Code, Cornelius NC  
 Downtown Code, Fort Myers FL  
 Craig Ranch Code, McKinney TX  
 Atlantic Station Code, Atlanta GA  
 Coral Gables Code, Coral Gables FL  
 Grangmoor Code, Montgomery AL  
 Downtown Birmingham Code, Birmingham MI  
 Naples Code and Master Plan, Naples FL  
 I'On Code, Mt Pleasant SC  
 Vermillion Code, Huntersville NC  
 Salamanca Code, Miami FL  
 Habersham Code, Beaufort SC  
 Lakelands Code, Gaithersburg MD  
 Belmont LMO, Belmont NC

**NEIGHBORHOOD MASTER PLANS**

Civic Master Plan, Beaufort SC  
 Wilkinson South, Cramerton NC  
 Cherokee Farms, Beaufort SC  
 Merry, Aiken SC  
 Fallschase, Tallahassee FL  
 TOD Master Plan, Cornelius NC  
 Craig Ranch, McKinney TX  
 Celadon, Beaufort SC  
 Anchor Mill TOD, Huntersville NC  
 Cheshire, Black Mountain NC  
 Hannibal Square Revitalization, Winter Park FL  
 Coconut Grove Revitalization, Miami FL  
 I'On, Mt Pleasant SC  
 Vermillion, Huntersville NC  
 Salamanca, Miami FL  
 Lakelands, Gaithersburg MD

**VILLAGE, TOWN & CITY MASTER PLANS**

Sandy Point, Edenton NC  
 Grangmoor, Montgomery AL  
 Trillium, Cashiers, NC  
 Habersham, Beaufort SC

**REGIONAL & COMPREHENSIVE PLANS**

Burton Regional Plan, Beaufort SC  
 Beaufort Civic Master Plan, Beaufort SC  
 Hillsborough County Comprehensive Plan, FL  
 Onondaga County Plan, NY

**408** CHARRETTES  
 ATTENDED

**157** OF THOSE  
 DIRECTED

**(PROJECTS CONTINUED): SELECTED INTERNATIONAL EXPERIENCE**

**DOWNTOWN MASTER PLANS**

Haikou Waterfront Plan, Haikou, China  
 Ripley Urban Core, Ipswich, QLD, Australia  
 Central City South, Christchurch, New Zealand  
 Five Mile, Queenstown, New Zealand  
 Bin Hai Waterfront, Dalian, China  
 Downtown Taiyuan, Taiyuan, China

**URBAN INFILL/TOD MASTER PLANS**

Abu Dhabi Marina, United Arab Emirates  
 Haikou Waterfront Plan, Haikou, China  
 Lang Fang, Lang Fang China  
 Pacific View, Surfers Paradise QLD, Australia  
 Salacia Waters, Surfers Paradise QLD, Australia  
 Hope Island, Surfer's Paradise, QLD, Australia  
 SOL, Christchurch, New Zealand  
 Turners + Growers, Christchurch, New Zealand  
 Exelsa Village, Tauranga, New Zealand  
 Sydenham Square, Christchurch, New Zealand  
 Blacktown, Sydney, NSW, Australia

**NEIGHBORHOOD MASTER PLANS**

Haven, Providenciales, Turks & Caicos  
 Zheng Zhou, Zheng Zhou China  
 Zhong Yi Garden, Beijing China  
 Diplomatic Enclave, Putrajaya, Malaysia  
 Pacific View, Surfers Paradise, QLD, Australia  
 Salacia Waters, Surfers Paradise, QLD, Australia  
 Hope Island, Surfer's Paradise, QLD, Australia  
 Jindee, Perth, WA, Australia  
 Modena Beach, Tauranga, New Zealand  
 Blacktown, Sydney, NSW, Australia  
 Sydenham Square, Christchurch, New Zealand

**VILLAGE, TOWN & CITY MASTER PLANS**

La Primavera Resort, Leon, Mexico  
 Googong New Town, Canberra, ACT, Australia  
 ECO Island Master Plan, United Arab Emirates  
 Madinat al Arab, United Arab Emirates  
 New City, Beirut, Lebanon  
 Five Mile, Queenstown, New Zealand  
 New City Extension, Nanning, China  
 Guan Town Extension, Guan, China  
 Guilin New Township, Guilin, China  
 Nusajaya City, Malaysia  
 Dos Rios, Laguna, The Philippines  
 Daijeon New City, South Korea  
 Bulacan City Extension, Manila, The Philippines  
 Lang Fang City Extension, Lang Fang, China  
 Bin Hai Waterfront, Dalian, China  
 Boydtown, Bega Valley Shire, NSW, Australia  
 Ripley, Ipswich, QLD, Australia  
 Sweetwater, Hunter Valley NSW, Australia  
 Weiti Villages, Auckland, New Zealand

**RESORT MASTER PLANS**

ESCAP Village, St Lucia  
 Piripai, Whakatane, New Zealand  
 Ocean Beach, Hawkes Bay, New Zealand  
 Wire Station, Kerikeri, New Zealand  
 Weiti Villages, Auckland, New Zealand

**SPECIAL PROJECTS**

Mount Peter Tropical Architecture, Cairns, QLD, Australia  
 Weiti Housing Types, Auckland, New Zealand  
 Worker Housing Units and Neighborhood Design, Iraq Reconstruction, Iraq  
 Laverton Air Base Redevelopment, Melbourne, VIC

**CODING & ZONING**

Zheng Zhou Code, Zheng Zhou, China  
 Mount Peter Sector Plan, Cairns, QLD, Australia  
 Ripley, Ipswich, QLD, Australia  
 Jindee, Perth, WA, Australia  
 Sweetwater, Hunter Valley NSW, Australia  
 Hope Island, Surfer's Paradise, QLD, Australia  
 Weiti Villages, Auckland, New Zealand  
 Modena Beach, Tauranga, New Zealand  
 Excelsa Village, Tauranga, New Zealand  
 Central City South, Christchurch, New Zealand  
 Ocean Beach, Hawkes Bay, New Zealand  
 Five Mile, Queenstown, New Zealand  
 Platinum City, Bangalore, India  
 Wiroa Station, Kerikeri, New Zealand

**REGIONAL & COMPREHENSIVE PLANS**

Van Don Plan, Ha Long Bay, Vietnam  
 Guilin New Township, Guilin, China  
 Ripley Valley, Ipswich, QLD, Australia  
 New City Extension, Nanning, China  
 Daijeon New City, South Korea

ALL DEMETRI'S PROFESSIONAL CERTIFICATIONS AND AFFILIATIONS REMAIN CURRENT AND IN GOOD STANDING.



### CERTIFICATIONS & AFFILIATIONS

2012: CONGRESS FOR THE NEW URBANISM – ACCREDITED  
1999: URBAN LAND INSTITUTE  
1996: AMERICAN INSTITUTE OF CERTIFIED PLANNERS  
1993: CONGRESS FOR THE NEW URBANISM  
1992: AMERICAN PLANNING ASSOCIATION

### ACADEMIC

1992: MASTERS PROGRAM – URBAN PLANNING & GEOGRAPHY  
UNIVERSITY OF NORTH CAROLINA, CHARLOTTE  
1988: BACHELOR OF ARTS – POLITICAL SCIENCE & BUSINESS  
UNIVERSITY OF NORTH CAROLINA, CHAPEL HILL